

Nari National 2018-2019 CotY Program

Bathroom Remodel under \$25k

Client Vision / Project Statement

Our clients wanted our help to transform their guest bathroom into a fresh, bright new space. With their growing family, in addition to the cosmetic updates they wanted to maximize any storage space in the vanity. We helped design cabinetry that was user friendly for the little kids along the way.

The use of color and brass fixtures in the bathroom, gives the room a much more modern feel. The brass tones and bright white wall tile bring warmth into the bathroom space. And the decorative cement floor tile brings in an old world charm.

Our clients were extremely satisfied with the final guest bathroom style and design.

After Bathroom



Before Bathroom

- Outdated drop-in oval sink with brass trim
- Outdated melamine countertop



After Bathroom



After Bathroom

- Wall mounted angled mirror
- Wall mounted brass sconces
- Wall mounted brass faucet
- Deep storage drawers
- Full overlay shaker doors/drawers
- Wall paint SW Lazy Gray at fifty per cent
- Trim SW Snowbound



After Bathroom

- Deep drawer storage
- Six inch pull-out step in toe kick



Before Bathroom

Outdated 4x4 tile surround

Outdated ceramic soap holder

Outdated fixtures

Damaged bath finish



After Bathroom

-White subway tile
installed to ceiling

-Shower niche

-Brass shower fixtures

-Tub reglazed with SW
Snowbound

-Brass wall mounted
vanity fixtures



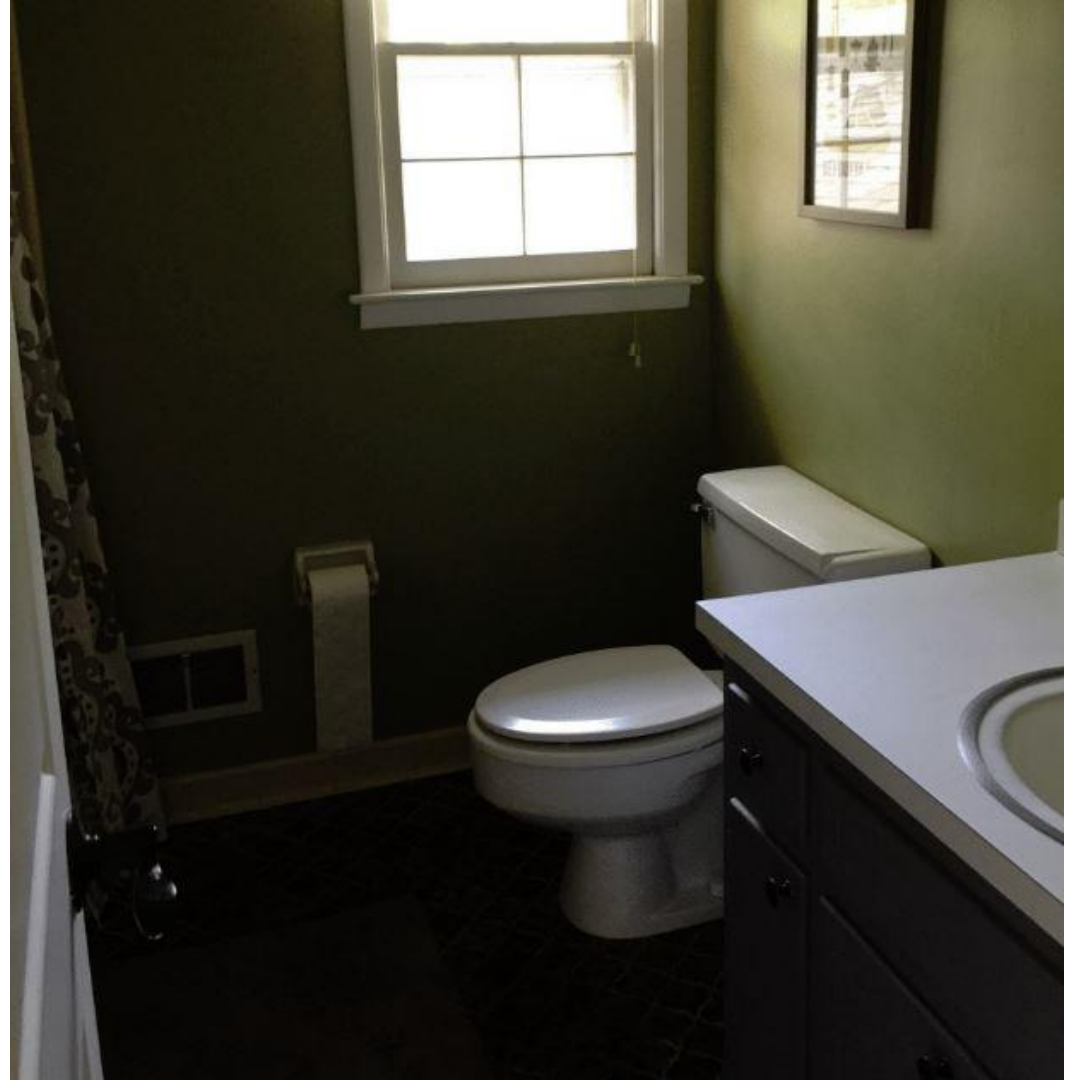
After Bathroom

Modern brushed brass cabinet hardware,
light fixtures and hooks



Before Bathroom

- Dark outdated decor and wall color
- Window sash needs repair
- Outdated fixtures / cabinetry / lighting



After Bathroom

- New window sash
- Kohler toilet
- Subway tile walls
- 42" vanity
- White Coconut 3cm Quartz
- Rectangle undermount sink



After Bathroom

8x8 Cement Tile “Bilbao”



